

# 2025 HLPF VIRTUAL SIDE EVENT

CREATING A THRIVING WORLD  
THROUGH EDUCATION AND HEALTH

16 JULY 2025

---

**DR. RITA LUTHRA**  
President

Women's Health and Education Center (WHEC)

*NGO in Special Consultative Status with ECOSOC of the UN*

*Global e-Learning, e-Health and e-Government Platform*

<http://www.WomensHealthSection.com>



# AGENDA

---

1. To track global digital cooperation - Need for an ethical, and transformative framework for generative artificial intelligence (AI) that is not extractive, exploitive, centralized and corporatized, but embodying values of a humane and transformative paradigm based on democratic and distributive integrity.
2. To track on innovation and development – A dedicated, multilateral hub – linked to regional and national nodes and mechanisms.
3. Technical and policy capabilities for future-ready innovation ecosystems – training policy makers on an ongoing basis.
4. Lessons learned from the shortcomings of the technology access for the Least Developed Countries (LDCs);
5. The financing track for innovation and frontier technology and science impetus.

# GLOBAL PLATFORM

---

A Roadmap for Transformation of Education and Health, with especial focus of women, girls, migrants and marginalized population.

1

Groundbreaking initiative providing for underprivileged communities. Collaboration with the World Health Organization – WHO and e-learning publication [womenshealthsection.com](http://www.womenshealthsection.com/content/documents/WHO_PMNCH_and_WomensHealthSection.pdf)  
[http://www.womenshealthsection.com/content/documents/WHO\\_PMNCH\\_and\\_WomensHealthSection.pdf](http://www.womenshealthsection.com/content/documents/WHO_PMNCH_and_WomensHealthSection.pdf)

2

Championed the integration of technology in education and health. Actively working on expanding UNESCO Chair Program.

3

Actively engaged with governments, NGOs, and corporate entities at the National and International levels.

# IMPACT

---

We aim to mobilize humanity's collective intelligence, that involves youth, educators, civil society, government's, business, corporations, and the stakeholders.



# TOOLS FOR CHILD DEVELOPMENT

---

1. To help teachers improve learning skills of students;
2. To help boys and girls stay in school, continue to stay focused on the productive future;
3. To encourage girls, women and minorities in STEMM Programs;
4. To improve their learning-potential;
5. To help students learn the skills they need for leadership-roles and good role-models;
6. Mental-Health Programs to prevent gender and gun violence;
7. How to handle life's challenges for good mental health.

# SUSTAINABLE DEVELOPMENT GOALS (SDG) LEARNING

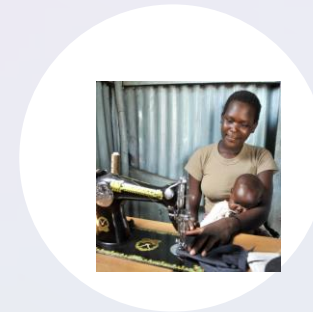
Knowledge and learning are humanity's greatest renewable resources for responding to challenges and inventing alternatives.

Education does more than respond to a changing world.

WHEC's recommendations and areas of development.



HOPE IN AFRICA

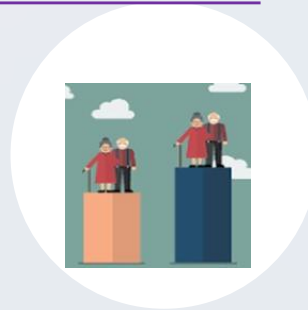


DECENT WORK FOR  
ALL

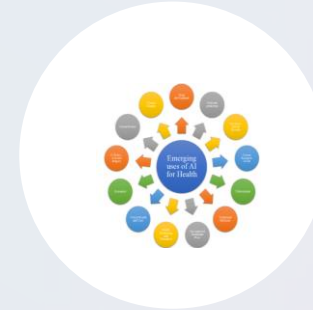


EMPOWERING WOMEN  
THROUGH EDUCATION

<https://hlpf.un.org/2022/programme/improving-global-partnerships-for-education-and-health>



HEALTHY AGEING



ARTIFICIAL INTELLIGENCE  
(AI) LITERACY AND  
GOVERNANCE



WHO | E-LEARNING PUBLICATION; WOMENSHEALTHSECTION.COM

[HTTP://WWW.WOMENSHEALTHSECTION.COM/CONTENT/DOCUMENTS/WHO\\_PMNCH\\_AND\\_WOMENSHEALTHSECTION.PDF](http://www.womenshealthsection.com/content/documents/who_pmnch_and_womenshealthsection.pdf)



# PURPOSE

---

1. To discuss sound policies and planning as well as efficient implementation arrangements, to achieve our common agenda.
2. To generate discussion and action on the role of education, knowledge and learning in view of the predicted, possible and preferred futures of humanity and the planet.
3. Understanding Education and Health are Human-Rights.

# PARTNER VOICES AND COMMUNITY VOICES

---

- 62<sup>nd</sup> Commission for Social Development (CSocD62) Side Event; Towards Education and Health for all : Core Enabler of the UN 2030 Agenda. Available @ <https://social.desa.un.org/sdn/towards-education-and-health-for-all>
- UN Foundation – 78<sup>th</sup> World Health Assembly (WHA78), Geneva, Switzerland. Summary, concept note of the Side Event; Health and Education: The Best Building Blocks for Sustainable Development. Available @ <http://www.womenshealthsection.com/content/documents/Summary-WHA78-Side-Event-2025.pdf>
- 9<sup>th</sup> Multistakeholder Science, Technology and Innovation (STI) Forum – Science-Policy-Brief. Artificial Intelligence and Ethical Consideration in Neurotechnology. Available @ [https://sdgs.un.org/sites/default/files/2024-05/Luthra\\_Artificial%20Intelligence%20and%20Ethical%20Considerations%20in%20Neurotechnology.pdf](https://sdgs.un.org/sites/default/files/2024-05/Luthra_Artificial%20Intelligence%20and%20Ethical%20Considerations%20in%20Neurotechnology.pdf)



# SUMMARY AND TAKE -AWAY MESSAGES

Of all the health statistics monitored by the WHO, maternal mortality and morbidity (both physical and mental), shows the largest discrepancy, between developed and developing countries. Every day, at least 700 women and girls die, 1 every 2 minutes, due to complications of pregnancy and childbirth. And hundreds more have short- and long-term disabilities.

90% of these deaths and disabilities occur in the developing countries.

Quality education and universal healthcare (UHC) are the most important investments that any country can make for its future and for its people.

Investing in health and education is, investing in people, and investing in our collective future.

Future of Education and Health is – DIGITAL; if harnessed properly, the digital revolution can be one of the most powerful tools for ensuring quality health and education for all.

IMPROVING MATERNAL HEALTH *through* EDUCATION

<http://www.womenshealthsection.com/content/heal/healo14.pdf> (UN Chronicle)



# THANK YOU

---

**DEDICATED TO MATERNAL AND CHILD HEALTH WORLDWIDE**

From all of us at the Women's Health and Education Center (WHEC) and

Dr. Rita Luthra

e-mail: [Rita@WomensHealthSection.com](mailto:Rita@WomensHealthSection.com)

